



RESPONSE Final Conference 19-21 May 2026 in Turku, Finland

Practical information

Travelling to Turku

Turku is located in the Southwest-Finland region and can be reached directly by plane or ferry, and via Helsinki – by train or bus.

By plane:

- [Turku international airport](#) offers direct connections from Gdansk, Bucharest, and Vilnius (operated by WizzAir), from Riga (by AirBaltic), and from Copenhagen and Stockholm (by SAS). The airport is located 8,5 km from the city centre. The regular bus connection (line 1), departing from the terminal every 10 minutes, is available daily for the single ticket price of 3,15 EUR (card payment); approximate time of journey to the city centre is 20-25 minutes. Taxi stand can be found right outside the terminal; approximate cost of ride to the city centre is 30 euro.

By ferry from Stockholm:

- Ferries connecting Stockholm with Turku run daily through [Viking Line](#) and [Silja Line](#). Bus connection (line 1), departing from each of the terminals every 5-10 minutes during the peak hours, is available to the city center for the single ticket price of 3,15 EUR (card payment) and the bus takes ~ 10 minutes.

By bus from Helsinki-Vantaa Airport:

- The bus schedules can be checked and tickets booked from <https://www.matkahuolto.fi/en> (often tickets are cheaper if bought online than from the driver), departing destination “Helsinki Airport”. Approximate travel time is 2 h 15 min, sometimes involving the change of the bus (the driver will normally announce if it happens). For some flight connections, [Finnair](#) offers transport by bus from Helsinki Vantaa Airport to Turku bus station.

By train from Helsinki-Vantaa Airport:

- The train schedules can be checked and tickets booked from <https://www.vr.fi/en>, with departure from “Helsinki Airport”. Choose your arrival at “Turku (City Centre, Logomo)” or “Kupittaa (Turku)” depending on the location of your stay. Approximate travel time is 2 h 30 min, and involves the change of the train at Pasila station in Helsinki (approx. after 20 min of travel).



Transport in Turku

Taxi numbers: 0200 10041, +358 600 14121 or +358 800 02120

Local public transport planner can be found at <https://www.foli.fi/en>. Tickets may be bought using [contactless payment](#) with a credit/debit card on the bus. You can also try out Fölläri city bikes during your stay. The location of bike stops can be found in the transport planner. [Follow the Fölläri instructions](#) to activate the bike.

Accommodation

Turku offers a variety of hotels to choose from. We recommend you take the proximity to the event venues on each day into account when choosing where to stay. A hotel close to the city centre, such as [Scandic Hamburger Börs](#), [Scandic Plaza](#), [Scandic Julia](#), [Sokos Hotel Wiklund](#) or [Sokos Turun Seurahuone](#) will offer walking distance and/or good connections to the event venues on all three days. Other hotels close to the city centre include [Scandic Go](#) and [Radisson Blu Marina Palace](#), with [Hotel Kakola](#) a bit further away, but with good connections.

Meeting venues and site visits (details will be updated after the registration's closed)

The consortium meeting programme is held at different venues throughout the event, all located in different parts of the city.

Tuesday 19th: The first day will begin at Turku City Theatre (Itäinen Rantakatu 14, 20800). From there, depending on which site visit you choose, we will travel by foot or by organised transportation to the site visits and back to the city centre. We offer participants to join one of the following site visits

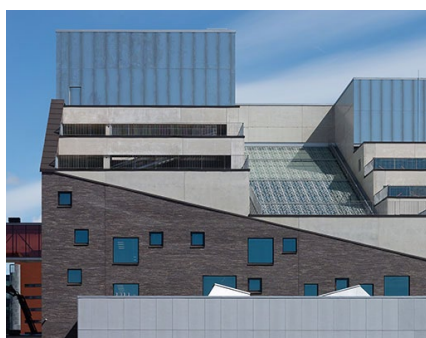
- 1) [Skanssi Biodiversity Park](#) hosted by Urban Biodiversity Parks project (2023-2027) funded by European Urban Initiative
- 2) Energy solutions and innovations in [Turku Science Park](#) hosted by Turku Technology Properties
- 3) Revitalisation of Old Town and concept of [Art House Turku](#) hosted by the city of Turku
- 4) [Turku University Botanical Garden](#) hosted by UTU

Wednesday 20th: The second day starts with a PED visit at the Student Village – in the yard of Tyyssija building (Inspehtorinkatu 12, 20540) and will continue in Science Park buildings [ICT-City](#) and [EduCity](#) (Joukahaisenkatu 3 and 7, 20520.)

Thursday 21st: The last day – internal Project Steering Committee meeting is held at Forum Marinum (Linnankatu 72, 20100).



Turku City Theatre ©Henri Taponen



EduCity ©Vesa Loikas Photography



Forum Marinum © Antti Laiho

Evening programme

Tuesday 19th: Following site visits, a short cocktail reception with a few small bites is offered at Aboa Vetus & Ars Nova museum, through restaurant Brundeli (Itäinen Rantakatu 4-6, 20700).

Wednesday 20th: The project dinner is held at the archipelago restaurant Airi (Valaanpyytäjänkatu 10, 20900). Transportation by boat will be organised to and from the dinner. The boat will leave at 18:30 sharp from Läntinen Rantakatu 37 and arrive to the same drop off point at approx. 22:30. It is also possible to reach the restaurant using public transport (buses 5A + 53).



Aboa Vetus, Rettig palace © Wikipedia



Restaurant Airi © Airi

Registration

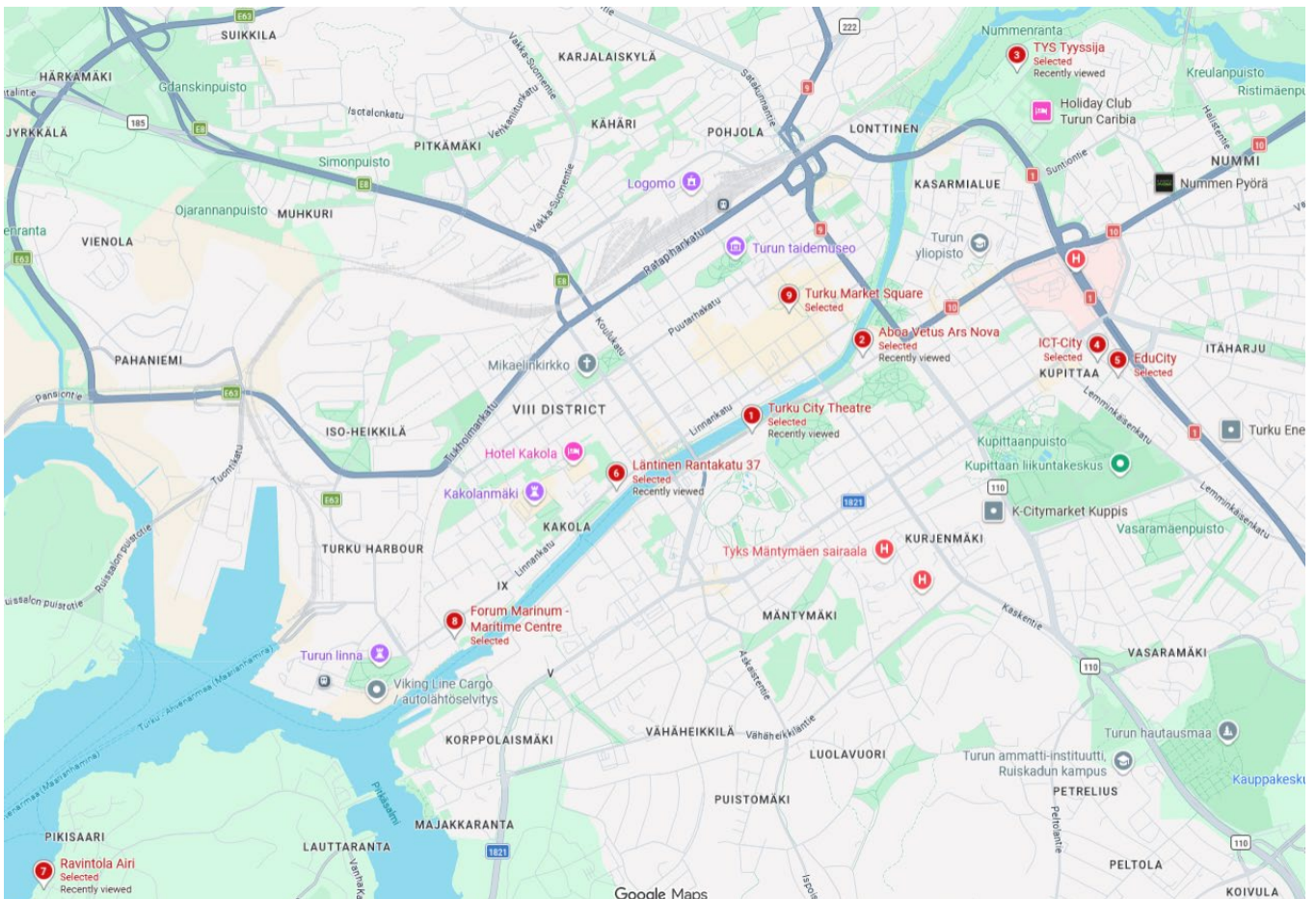
Please register your participation by **30 April 2026** via the link: <https://www.lyyti.in/RESPONSE2026>

Get in touch with the organising committee

Olena Zinchuk
olena.zinchuk@turku.fi
+358 40 729 8501

Helmi Andersson
helmi.andersson@turku.fi
+358 40 723 8348

Juuso Virtanen
juuso.virtanen@turku.fi
+358 40 159 8950



What to see and experience in Turku

We of course recommend that you extend your visit, to enjoy our lovely city. Here are some of our top choices for what to see and experience in Turku and nearby.

Places to visit

- [Ruissalo island](#)
- [city of Naantali](#)
- [Archipelago Sea](#)
- [Turku Castle](#)
- [Turku Art Museum](#)
- [Forum Marinum](#) - National specialist museum for Maritime History, and the Finnish Navy Museum
- [Aboa Vetus & Ars Nova](#) – Museum of Archaeology and Contemporary Art
- [Luostarinmäki](#) - wooden houses area that escaped the Great Fire of 1827

Cafés, bars and restaurants

- [Café Art](#) – cozy cafe on riverbank, locals' favorite
- [Gaggi](#) – cafe specializing in cakes
- [Café Ankka](#) – kiosk offering best doughnuts (munkit) in the world
- [Koulu](#) – brewery restaurant located in old school building
- [Cosmic Comic Cafe](#) – best selection of craft beers in Turku, likely in all of Finland
- [Vinossa](#) – European bistro & natural wines, run by chef who won Turku citizen 2025 award
- [Fred](#) – Finnish kebab made better
- [450](#) – Neapolitan pizza, pasta and gelato
- [Friends & Burgers](#) – good burgers, especially with friends :)
- [Mami](#) – refined bistro, Nordic flavours meet French kitchen
- [Roster](#) – bistro with international mix of bold flavors
- [Oobu](#) – authentic archipelago dishes blending traditional and modern

Shopping

- [Market Hall](#) – traditional delicatessen counters, speciality shops, restaurants and cafes
- [PUF](#) – Finnish design store curating small local clothing and accessories brands
- [Kui design](#) – Turku locally produced merch and souvenirs
- [Brinkkala yard](#) handicrafts boutiques
- [Gryn](#) – sourdough bakery

Dictionary

- **Hei / moi / moro / päivää / aurinkoista** – can be used interchangeably for greeting people
- **Hei hei / moi moi / heippa / moikka / nähdään** – for bidding farewells
- **Kiitos / kiitti / tackar** – for expressing thanks